



# COMPANY PROFILE



## COMPANY HISTORY

The company was established in Dubai early 1980 with three Directors, Swedish, English and UAE national respectively. The company is now transformed into a Limited Liability Company under UAE law with a share capital of Dhs 3,000,000.00 (US\$ 820,000.00).

**The main activities are  
Construction Management,  
Consultancy,  
Turn-key construction and Trading.**

Our strength is to design buildings with energy savings and low maintenance costs in mind and equipped with the latest technology for their purpose i.e. logistics or manufacturing. In such projects, we act in the capacity of advisor to the client for budget purposes, consultant for planning permission and as construction manager, with the aim to hand over to our client a fully operational building inclusive of items such as racking, computer systems, trucks, machineries, office interiors etc.

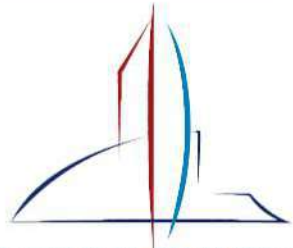
## OUR BUSINESSES

Over the years Pax-Kent has spread its wings into various activities and have separate Trade Licenses for those:

- 1 A.D.G Engineering Consultant**  
Architectural Design & Engineering | Project Management
- 2 Fars Al Mazrooei Contracting**  
Super Flat Concrete Flooring | Building Contracting
- 3 Pax-Kent Laundry/Filter Solutions**  
Laundry Products | Industrial Filters
- 4 PKI Marina/PKI Naham/PKI Marine**  
Floating Concrete & Aluminium Pontoons | Marine Equipments
- 5 PKI Technical Services**  
Technical Services | General Maintenance | Annual Maintenance
- 6 Scandinavian Cooling Systems**  
Specialized Low Energy Cooling & AC Systems | Annual Maintenance



# A.D.G. Engineering Consultant



ARCHITECTURAL DESIGN GROUP

**ADG**

ARCHITECTS, ENGINEERS &  
INTERIOR DESIGNERS



## A.D.G. Engineering Consultant

ADG (Architectural Design Group) was established in Dubai September 2004 and merged in 2011 with Pax-Kent International LLC that was established in 1980, to be able to undertake Architectural, Structural, MEP and Construction Management projects of any size.

Our Construction Management and Consultancy Services have, in close cooperation with clients, developed, purpose-built offices, distribution centers, cold stores and factories, located from Athens to Jakarta with a concentration in UAE. Our strength is to design buildings with energy saving properties i.e. solar powered A/C, thermal storage, recycling of waste water, etc to achieve low operation costs and long life span. Some of our buildings have earned Platinum LEED accreditation and one was voted "the best industrial building in the MENA region 2010".

**Our MEP and Structural Division collaborate with Other Project Management Firms and undertake MEP and Structural Design services for specialized Projects.**



Architectural  
Design &  
Engineering  
Services



Project  
Management &  
Cost-Consultancy



MEP & Structural  
Specialized Designs



Architectural Design & Engineering Services  
Project Management & Cost- Consultancy  
MEP & Structural Specialized Designs

 **PHONE** +971 4 884 8010 | +971 4 324 0447 **FAX** +971 4 889 5533 | +971 4 324 0451

 **WEBSITE** [www.paxkent.com](http://www.paxkent.com)  **E-MAIL** [adg@paxkent.ae](mailto:adg@paxkent.ae)

 **LOCATION** Dubai Investment Park 2



**Building  
Contracting**



**Specialized  
Flooring**



## Fars Al Mazrooei Contracting

### Construction / Concrete Flooring

FAM Flooring Division has designed and completed over 4 million square meter of superflat industrial concrete floors for clients in UAE, Qatar, Indonesia and Malaysia. FAM's client base reflects multi national and regional players. To build on its success FAM continues to invest in the latest innovative technology to lay high tolerance floors to the highest standards.

We own and operate three large Somero Laser Screed machines and one automatic topping spreader along with sufficient number of ride- on double disc power floating machines.

We prepare, for all our projects, technical submissions including Method Statement, Concrete Mix Design and Material Specifications.



### Turn-Key Construction

FAM has very strong relationships with DM, Trakhees, DWC and other Authorities. We have in-house engineering capacity to back our Turn-Key Projects and have executed a number of such Projects all over the Middle East and Far East.

### Our construction division is committed to:

- ✓ Comprehensive QA system employed for all activities.
- ✓ The safety of all our staff.
- ✓ Delivering on time and on budget



We have successfully carried out  
Turn-Key Constructions for:

- ✓ Industries
- ✓ Cold Stores
- ✓ Offices
- ✓ Distribution Centers



We design Construction joint layout drawings incorporating all kinds of joint details, existing structure and the racking system.

We have all required insurances such as Design Insurances, Contractors All Risk Insurance according to local rules/regulations and practices.

We provide Floor Flatness Survey Reports in line with international standards and guidelines.

## Our Services

### JOINTLESS FLOORS

Joints are one of the greatest problem in a modern warehouse. The use of Equipment with small wheels is not suited for saw cut joints because every time the equipment drive over the joint both the edges of the joints and the wheels of the equipment get damaged. This results in increased maintenance and repair works.

### INDUSTRIAL FLOORS

An unlevel storage floor will impact other handling systems, such as pallet racks, automated storage and retrieval systems, conveyors, horizontal carousels and narrow-aisle truck operations. Therefore, it is vital to ensure a completely flat floor.

### VACUUM DEWATERED FLOORS

FAM Flooring Division is the first contractor in the Middle East to introduce Vacuum Dewatering of floor casting. Vacuum Dewatering is the best way to reduce the water content in the fresh concrete. The risk of rapid drying of the concrete surface results in curling and cracking

## Our Clients



PHONE +971 4 885 5316 | +971 4 324 0447 FAX +971 4 889 5533 | +971 4 324 0451

WEBSITE [www.fam.ae](http://www.fam.ae)

E-MAIL [info@fam.ae](mailto:info@fam.ae)

LOCATION Dubai Investment Park 2



## Pax-Kent Laundry Solutions

We are one of the leading suppliers of industrial laundry machine consumables in UAE, Middle East and Asian Countries. We specialize in Flatwork Ironer and Laundry Press Machines consumables. We have a wide range of products for Laundry consumables which we supply to all major Five Star Hotels, Hospitals and Commercial Laundries.

### Sewn Products / Press Clothing

The Sewn Products Department supply press pads, air bags, laundry bags, net bags, trolley liners, conditioning cloths, ironer padding and wire wool abrasive pads. We produce any non-standard sizes on request.

### Feed Fold Bands

We supply Needed composite products of 1500 gr/m<sup>2</sup> with poly-aramid fibres. This product is highly thermostablished in temperature and time so that the residual shrinkage at 200°C is under 2%.

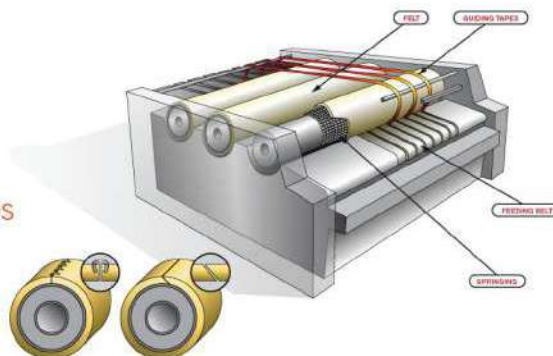


Laundry Products

Industrial Filters

### Other Products

- ✓ Guide Tape
- ✓ Padding Products
- ✓ WAX-Calendar Smearing Waxes
- ✓ VISELACER, Clips and Pins
- ✓ Feed Fold Bands



# Pax-Kent Filter Solutions

We are one of the leading industrial Filter suppliers in UAE, Middle East and Asian Countries. We specialize in Fabric Filter and Cages. We supply all major cement, steel, aluminum, asphalt, gypsum, food, metallurgical, and lime Industries.



## Polyester Filter Media

Polyester is the most versatile, most cost effective and most widely used filter medium for dust collection. It is strong, abrasion resistant, can work up to 150°C and has good resistance to common acids, solvents and oxidising agents.

## Homopolymer Acrylic Media

Homopolymer acrylic is essentially made from 100% of acrylonitrile. The strength of acrylic is inherently quite low. Sometimes this is boosted by mixing the fibres with polyester and weaving the reinforcing scrim from acrylic and filament Polyester yarns. Even though acrylic doesn't hydrolyse, a number of applications use liquid repellent treatments to reduce the tendency of moist or oily cakes to adhere. The major attributes of acrylic fibres are its excellent resistance to hydrolysis.

### Applications for Fine Filtration Are :

- Combustion, Incineration, Pigments
- Industrial Vacuum, Metal Processing
- Coal, Food, Toxic, Chemicals
- Minerals

## Our Clients



## Antistatic Filter Media

It is widely known that static electrical charges can build up in certain dusts. Anti-static filter media has a very good electrical insulation and it is used where there is high potential for electrical charges to build up in a filter. It can then instantaneously discharge electricity (like a lightning bolt) and cause an explosion. This danger can be ameliorated by incorporating conductive fibres into the filter media.

## Other Filters Are:

- ✓ PPS Filter Media
- ✓ Aramid Filter Media
- ✓ Polyimide (P84) Filter Media
- ✓ Polypropylene Filter Media

### Modest Temperature Applications Are :

- Nuisance dusts, Wood, Lead, Quarrying
- Fertiliser, Metal processing, Grain handling
- Tobacco, Cement, Ceramics, Flour
- Plaster Smelting, Polishing Milk

PHONE +971 4 324 0447 | +971 4 887 4016 FAX +971 4 324 0451

WEBSITE [www.paxkent.com](http://www.paxkent.com) E-MAIL [paxkent@paxkent.ae](mailto:paxkent@paxkent.ae) | [info@paxkent.ae](mailto:info@paxkent.ae)

LOCATION Dubai Investment Park 2

Pax-Kent International L.L.C Since 1980





## PKI Marina/PKI Naham/PKI Marine

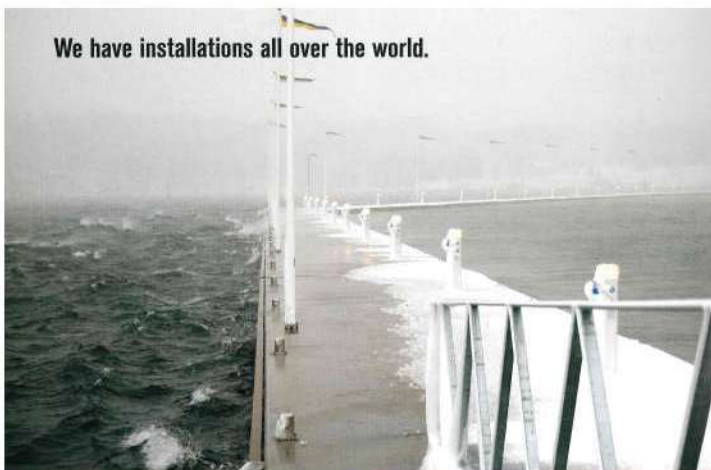
PAX-KENT INTERNATIONAL L.L.C (PKI) is the representative of SF MARINA in the UAE. The concrete pontoons are manufactured by our sister company PKI Marina FZ LLC in the UAE. SF MARINA has produced pontoons in Sweden since 1925, in Saudi Arabia since 1987 and in the UAE since 2004.

PKI has successfully produced and installed numerous pontoons and completed most installations on a turn-key basis.

Connectors, gangways, mooring fingers, cleats etc. are part of SF MARINA's product range. When we need electrical and mechanical components and accessories for the installation of services we supply from specialised international manufacturers.

PKI Marina is the Agents for :

- ✓ TallyKey® Service pedestals
- ✓ KECO, Pump-Out systems
- ✓ Seaflex Mooring Systems
- ✓ ShorePort Jet Ski docks
- ✓ Aister Marinas, Aluminium pontoon system, used in combination with the SF MARINA Type 31 concrete floats



We have installations all over the world.



Floating  
Pontoons



Marine  
Equipments



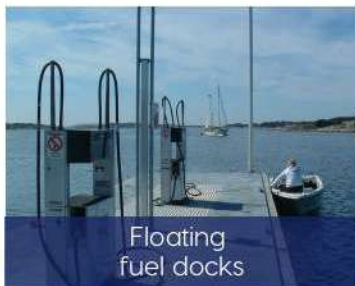


We look forward to answer you with your projects and assure you of our outmost cooperation.

## Applications



Commercial fishing harbours



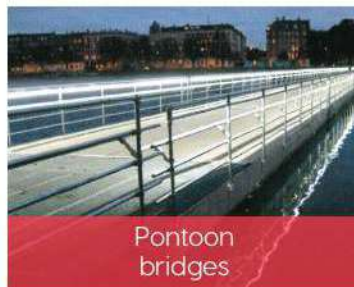
Floating fuel docks



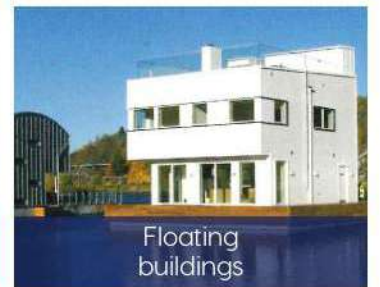
Ferry Landings and Jetties



Fish farming projects



Pontoon bridges



Floating buildings

Our range of breakwater pontoons includes pontoons of 8m to 10m in width and up to 20m in length. The connectors for these pontoons are designed for a breaking load in excess of 250 tons per joint.

## Our Clients



شركة الحرفات  
البحرية الوطنية  
NATIONAL MARINE  
DREDGING COMPANY

ديوان ولي العهد  
CROWN PRINCE COURT



ProjectsLink

GHANTOOT GROUP  
مجموعة غنتوت

دكتور بلهور بنتي  
Dutco  
Belhour Bonny LLC

PHONE +971 7 244 4316 | +971 2 550 8018 | +971 4 324 0447 FAX +971 4 324 0451

WEBSITE [www.sfmarina-uae.com](http://www.sfmarina-uae.com) E-MAIL [rak@sfmarina-uae.com](mailto:rak@sfmarina-uae.com)

LOCATION Al Jazeerah Al Hamra Free Zone, Ras Al Khaimah

Pax-Kent International L.L.C Since 1980



## PKI Technical Services

PKI Technical Services is a fast growing division of Pax-Kent, based in Dubai and formed in April 2018 with the core values of utmost customer service and satisfaction.

The company looks after all technical services like General Maintenance & Repairs, Mechanical, Electrical, Plumbing works and other small scale modification and construction works.



Technical Services



General Maintenance



Annual Maintenance

## Our Services



1

Plumbing & Sanitary Contracting



2

Building Maintenance



3

Electromechanical Equipment Installation & Maintenance



4

Electrical Fittings & Fixtures Services



5

Painting and Wall Paper Fixing



### Our Clients



MARS



مرکز استیوونٹک  
الصحی



PHONE +971 4 324 0447 FAX +971 4 324 0451

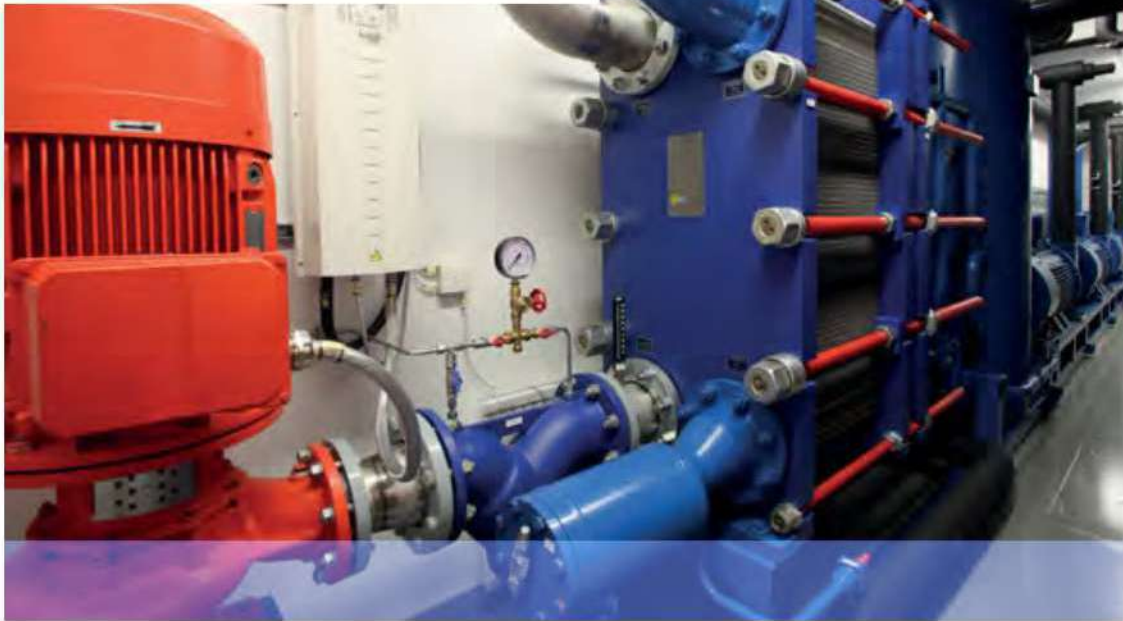
WEBSITE [www.paxkent.com](http://www.paxkent.com) E-MAIL [pkitech@paxkent.ae](mailto:pkitech@paxkent.ae)

LOCATION Dubai Investment Park 2

Pax-Kent International L.L.C Since 1980



**Scandinavian  
Cooling Systems LLC**



Specialized  
Low Energy  
AC Systems



Annual / Quarterly  
Maintenance

SCS was established in 1996 with experienced staff from the Refrigeration and Aircondition industry. We carry out the installations with different media such as NH3, CO2 and CFC-free Refrigerants and produce/install chillers.

## NH3 CHILLER

- ✓ Control system with Touch screen.
- ✓ Remote controlled and remote operated units.
- ✓ Screw Compressors with high COP and low energy consumption
- ✓ Plate Heat Exchangers, standard or semiwelded.
- ✓ Frequency Converters for capacity control and energy savings.
- ✓ Natural refrigerants i.e. NH3.
- ✓ Option for Heat Recovery function.
- ✓ Manufacturing as per Refrigeration Standards and Pressure Codes PED and EN 378.

**WE  
DELIVER  
QUALITY**

## Applications

Our focus is customer tailor-made energy efficient installations of high quality and long life span. Our competence can match any challenge

-Food Industry.  
-Process Industry.  
-District Cooling.

-Heat Pumps.  
-Sport Arenas and Ice Rinks.  
-Capacity range 50-4000 KW.



**Pax-Kent International L.L.C Since 1980**

## Containerized Chillers

### Standard Delivery

- New 40" HC Container.
- Insulated walls, ceiling and floor including Fire Proof Insulation and internal cladding of Minerit.
- Sound proof. Max external sound transmission of 75 db (A).
- Machine room and emergency ventilation.
- Leak detector system with alarm.
- Internal lighting, heater and cooler element for outdoor applications.
- Workshop and service area for maintenance with tools and power connections for 3 phase 400 V or single phase 230 V.
- Personal safety equipment including oxygen mask, gloves and extinguishers.

All the equipment in the container are factory installed, manufactured and "dry tested" before delivery with i.e.

- » Oil and Suction filters.
- » Valves, Safety valves and Sensors from Danfoss.
- » Oil cooling and automatic keys circulation system.
- » Stainless Steel drip trays under the Plate Heat Exchangers.
- » Common exit line from all internal safety valves that terminate at the outside of the container.
- » Steel flexible hoses at the safety valves.
- » All pipe connections are complete with flanges for easy connection.



CONTAINERIZED  
NH3 CHILLERS

## On Site Installation

- Pipe installations all over Scandinavia, Europe and Middle East.
- Site constructed installations.
- Chilled water and Condensor Cooling Systems.
- District Heating and District Cooling Systems.
- Certified for pressure testing up to 180 Bar as per standards. EN 3834-2 and PED 13480 & 13445.



CO<sub>2</sub>-UNIT & PUMP MODULE

### CO<sub>2</sub>-Unit

- » Capacity range: Standard 10-1000 KW. Larger capacity on demand.
- » Vessels between: 100-10,000 litres.
- » Bitzer Compressors.
- » Danfoss Control Components.
- » Dryfilters in twin configurations.
- » Temp range: -50 degree C to + 150 degree C.
- » Pressure range: - 1 bar to 180 bar.

### CO<sub>2</sub>-Pump Module

- » Capacity range: Standard 10-1000 KW.
- » Vessels between: 100-10,000 litres.
- » Danfoss Control Components.
- » Hermetic Pumps in twin configuration.
- » Temp range: -50 degree C to + 150 degree C.
- » Pressure range: - 1 bar to 180 bar.



**Inspecta**  
SS-EN ISO 3834-2

**AAA**<sup>®</sup>  
HIGHEST CREDITWORTHINESS  
© Bisnode 2014

PHONE +971 4 887 4190 | +971 4 324 0447 FAX +971 4 324 0451

WEBSITE [www.paxkent.com](http://www.paxkent.com) E-MAIL [raghu@paxkent.ae](mailto:raghu@paxkent.ae) | [paxkent@paxkent.ae](mailto:paxkent@paxkent.ae)

LOCATION Dubai Investment Park 2

Pax-Kent International L.L.C Since 1980

# Some Of Our Projects



GAC Logistics Park  
Jebel Ali-Dubai  
- Distribution Center



Nestle Middle East  
Technopark-Dubai  
- Milk Powder Repacking Factory



Lipton Tea Factory  
Jafza-Dubai  
- Production Area



Pan Emirates Furniture  
Sharjah  
- Office & Distribution Centre



International Cap  
Technopark | Dubai  
- Factory & Distribution Center



African & Eastern  
DIP-Dubai  
- Distribution Centre & Office

# Some Of Our Projects



Gulf Agency Company  
Jafza-Dubai  
- Interior of Head Quarter



Jotun UAE Ltd  
Al Quoz-Dubai  
- Warehouse



Jotun UAE Ltd  
Al Quoz-Dubai



Jotun UAE Ltd | Al Quoz-  
Dubai. - Paint Factory &  
Utility Office

Gulf Agency Company  
Jafza-Dubai  
- Head Quarter



Jotun UAE Ltd  
Al Quoz-Dubai  
- Tank Farm Building



Jotun Paint | Al Quoz-Dubai  
- Water Based Factory



# Some Of Our Projects



Jotun Paint  
Al Quoz-Dubai  
- Solvent Based Factory



Gulf Agency Company  
Jafza-Dubai  
- Distribution Centre



ESAB Middle East  
JAFZA-Dubai  
- Distribution Center



Akzo Nobel Paints Gulf  
Al Quoz-Dubai  
- Powder Coating Factory



Joint Tank Services  
Jafza-Dubai. - Tank  
Container Cleaning Facility



International Paints  
Al Quoz-Dubai  
- Distribution Centre

Mc Cormick  
Jafza-Dubai  
- Food Factory & Warehouse



JTS  
Jafza-Dubai  
- Chemical Logistics & Office



Pyrotek FZE  
Jafza-Dubai  
- Factory & Distribution

# Some Of Our Projects



**Pax-Kent International L.L.C**  
DIP 2-Dubai  
- Warehouse & Office



**Matex Fabric Technopark**  
Jebel Ali-Dubai  
- Carpet Backing Factory



**Unilever Gulf**  
Jafza-Dubai  
- Tea Packing Factory

**Tencate Technopark**  
Jebel Ali-Dubai  
- Artificial Grass Factory



**Sapin Technopark | Dubai**  
- Can Making & Plastic Moulding Factory



**Nestle Waters**  
Technopark-Dubai  
- Water Bottling Factory

# Some Of Our Projects



International Cap  
Technopark | Dubai  
- Factory & Distribution Center

African & Eastern  
DIP-Dubai  
- Distribution Centre & Office



Samudra Combined  
Logistics- Jakarta-Indonesia  
- Office & Distribution Centre



Emerson  
Jafza-Dubai



Deal-Dubai  
- Cold Store, Warehouse &  
Office Building



Emerson  
Jafza-Dubai - Workshop,  
Warehouse & Office

Jotun Powder Coatings  
Al Quoz-Dubai  
- Staff Accomodation Facility



# Some Of Our Projects

Zodiac Services  
Dubai South - Workshop,  
Warehouse & Office



Alpine Metals-Technopark  
Dubai  
- Steel Storage Warehouse & Office



Champion Laundry  
DIP-Dubai

Integrated National Logistics  
DWC-Dubai  
- Cold Storage & Distribution Center



Freshly Frozen Foods  
DIP-Dubai  
- Factory Extension



FRESHLY FROZEN FOODS  
DIP-Dubai  
- Cold Store & Office

PHONE +971 4 884 8010 | +971 4 324 0447 FAX +971 4 889 5533 | +971 4 324 0451

WEBSITE [www.paxkent.com](http://www.paxkent.com) E-MAIL [adg@paxkent.ae](mailto:adg@paxkent.ae) LOCATION Dubai Investment Park 2

# Some of Our Projects



Project: DUBAI INDUSTRIAL CITY  
Completion: January 2019  
Area: 200 m<sup>2</sup>  
Flatness Tolerance: FM2



Project: GLOBAL SHIPPING LOGISTICS  
Completion: December 2019  
Area: 150 m<sup>2</sup>  
Flatness Tolerance: Power float



Project: SMD INTERNATIOAL  
Completion: December 2019  
Area: 3000 m<sup>2</sup>  
Flatness Tolerance: DM3



Project: TRISTAR TRANSPORT  
Completion: December 2019  
Area: 900 m<sup>2</sup>  
Flatness Tolerance: FM2



Project: NAFFCO FLOW CONTROL  
Completion: November 2019  
Area: 13,000 m<sup>2</sup>  
Flatness Tolerance: FM2



Project: Emirates Printing Press LLC  
Completion: September 2019  
Area: 2,750 m<sup>2</sup>  
Flatness Tolerance: FM2



Project : Legnano Teknoelectric Comp Middle East FZCO  
Completion: August 2019  
Area: 4,000 m<sup>2</sup>  
Flatness Tolerance: FM2



Project: Pyrotek Grade Slab  
Completion: August 2019  
Area: 4,000 m<sup>2</sup>  
Flatness Tolerance: FM2



Project: Dareen International  
Completion: August 2018  
Area: 11,000 m<sup>2</sup>  
Flatness Tolerance: DM2



Project: Tructek Inter. FZE  
Completion: September 2019  
Area: 600 m<sup>2</sup>  
Flatness Tolerance: DM 1



Project: MHE International Repackaging Serv. LLC  
Completion: August 2019  
Area: 2,980 m<sup>2</sup>  
Flatness Tolerance: Category 1



Project: Pyrotek FZE  
Completion: April 2019  
Area: 1,700 m<sup>2</sup>  
Flatness Tolerance: FM1



Project: E-Freight International LLC  
Completion: March 2019  
Area: 4,900 m<sup>2</sup>  
Flatness Tolerance: DM1



Project: Mark Zone Building Contracting LLC  
Completion: March 2019  
Area: 3,400 m<sup>2</sup>  
Flatness Tolerance: DM1

# Some of Our Projects



Project: Buildmark Contracting LLC  
Completion: February 2019  
Area: 6,000 m<sup>2</sup>  
Flatness Tolerance: FM2 Special



Project: Joint Tank Services FZCO  
Completion: January 2019  
Area: 5,200 m<sup>2</sup>  
Flatness Tolerance: DM2



Project: Al Fakher Tobacco Company  
Completion: December 2018  
Area: 4,700 m<sup>2</sup>  
Flatness Tolerance: DM1



Project: M/S Oriental Group FZE  
Completion: September 2018  
Area: 4,100 m<sup>2</sup>  
Flatness Tolerance: DM1



Project: City Pharmacy Co.  
Completion: July 2018  
Area: 16,000 m<sup>2</sup>  
Flatness Tolerance: FM2 Special



Project: Mohammed H. Sharbatly Co Ltd.(Bahrain)  
Completion: May 2018  
Area: 3,200 m<sup>2</sup>  
Flatness Tolerance: FM2 Special



Project: Faisal Al Nusif Trdng Cont.(FANTCO)  
Completion: March 2018  
Area: 1,900 m<sup>2</sup>  
Flatness Tolerance: DM1



Project: Germo Middle East FZCO  
Completion: December 2017  
Area: 2,000 m<sup>2</sup>  
Flatness Tolerance: DM2



Project: TLM International Freight Services  
Completion: December 2017  
Area: 8500 m<sup>2</sup>  
Flatness Tolerance: DM1



Project: Dr. Nutrition Middle East FZCO  
Completion: November 2017  
Area: 3,200 m<sup>2</sup>  
Flatness Tolerance: FM1



Project: Middle East Lubricants Comp. LLC  
Completion: November 2017  
Area: 1,200 m<sup>2</sup>  
Flatness Tolerance: FM2



Project: CU Air conditioning Industries LLC  
Completion: August 2017  
Area: 6,200 m<sup>2</sup>  
Flatness Tolerance: FM2



Project: Go Trade  
Completion: July 2017  
Area: 3,860 m<sup>2</sup>  
Flatness Tolerance: DM1



Project: Master Baker Marketing FZCO  
Completion: June 2017  
Area: 6,120 m<sup>2</sup>  
Flatness Tolerance: DM1

# Some of Our Projects



Project: Desert Face International  
FZCO Techno Park, Dubai  
Completion: February 21 2017  
Area: 4,900 m<sup>2</sup>  
Flatness Tolerance: DM2



Project: CCL Gulf Prestresses  
Concrete, Abu Dhabi  
Completion: June 8 2017  
Area: 150,000 m<sup>2</sup>  
Flatness Tolerance: DM2 & FM1



Project: MAPEI, DIP 2 Dubai  
Completion: April 27 2017  
Area: 5,200 m<sup>2</sup>  
Flatness Tolerance: DM2



Project: Royal Furniture, Ajman  
Completion: January 28 2017  
Area: 9,000 m<sup>2</sup>  
Flatness Tolerance: DM2



Project: Agility Global Logistics,  
DIP Dubai  
Completion: November 2016  
Area: 550 m<sup>2</sup>  
Flatness Tolerance: DM2



Project: Center Point Logistics,  
DWC DUBAI  
Completion: November 2016  
Area: 20,000 m<sup>2</sup>  
Flatness Tolerance: DM2



Project: SUPER TEC CONTRACTING  
LLC, DUBAI  
Completion: 11 SEPTEMBER 2016  
Area: 3,650 m<sup>2</sup>  
Flatness Tolerance: DM2



Project: HANS LOGISTICS, JAFZA,  
DUBAI  
Completion: 21 AUGUST 2016  
Area: 8,750 m<sup>2</sup>  
Flatness Tolerance: DM1



Project: MOHEBI LOGISTICS LLC,  
DIC, DUBAI  
Completion: 24th June 2016  
Area: 50000 m<sup>2</sup>  
Flatness Tolerance: High Tolerance



Project: RASHIDEEN, SAIF FREE  
ZONE, SHARJAH  
Completion: 8th June 2016  
Area: 6600 m<sup>2</sup>  
Flatness Tolerance: High Tolerance



Project: TRISTAR TRANSPORT  
(EPPCO), JAFZA DUBAI  
Completion: 11th MAY 2016  
Area: 4100 m<sup>2</sup>  
Flatness Tolerance: High Tolerance



Project: GLOBAL SHIPPING LOGIS-  
TICS LLC, DIC, DUBAI  
Completion: 4th March 2016  
Area: 33000 m<sup>2</sup>  
Flatness Tolerance: High Tolerance



Project: TRISTAR, JAFZA DUBAI  
Completion: 28th Jan 2016  
Area: 13000 m<sup>2</sup>  
Flatness Tolerance: Cat1



Project: OILFIELD SUPPLY DIC,  
DUBAI  
Completion: 5 Dec 2015  
Area: 16000 m<sup>2</sup>  
Flatness Tolerance: FM2s

# Some of Our Projects



Project: DEAL FZE, DWC, DUBAI  
Completion: End of Nov 2015  
Area: 2200 + 6000 m<sup>2</sup> (Truck Yard & Heater cable Area)  
Flatness Tolerance: High Tolerance



Project: AFRICAN & EASTERN, DUBAI INVESTMENT PARK  
Completion: 5th November 2015  
Area: 2000 m<sup>2</sup>  
Flatness Tolerance: DM1



Project: McCORMICK, JAFZA, DUBAI  
Completion: 16th Sept 2015  
Area: 1500 m<sup>2</sup>  
Flatness Tolerance: DM1



Project: DEAL FZE, DWC, DUBAI  
Completion: End of Sept 2015  
Area: 26000 m<sup>2</sup>  
Flatness Tolerance: Super flat



Project: AKZO NOBEL WAREHOUSE, AL QUOZE, DUBAI  
Completion: July 2015  
Area: 1860 m<sup>2</sup>  
Flatness Tolerance: FM2s



Project: DANZAS AIRFREIGHT DWC, DUBAI  
Completion: July 2015  
Area: 10600 m<sup>2</sup>  
Flatness Tolerance: Cat1



Project: BRANDS FOR LESS, JAFZA, DUBAI  
Completion: June 2015  
Area: 4500 m<sup>2</sup>  
Flatness Tolerance: DM2



Project: SBM, JAFZA, DUBAI  
Completion: June 2015  
Area: 8200 m<sup>2</sup>  
Flatness Tolerance: DM2



Project: AL SEER SPINNEYS KIZAD WAREHOUSE, ABU DHABI  
Completion: June 2015  
Area: 10694 m<sup>2</sup>  
Flatness Tolerance: FM2s



Project: SANDFORD LLC, DWC, Dubai  
Completion: May 2015  
Area: 9200m<sup>2</sup>  
Flatness Tolerance: DM2



Project: REAL FZE, JAFZA SOUTH, DUBAI  
Completion: Feb 2015  
Area: 4000m<sup>2</sup>  
Flatness Tolerance: Cat1



Project: GRANDSTORES DIC, Dubai  
Completion: Dec 2014  
Area: 15000m<sup>2</sup>  
Flatness Tolerance: FM2s



Project: MAG GROUP, JAFZA South, Dubai  
Completion: Oct 2014  
Area: 20500m<sup>2</sup>  
Flatness Tolerance: Cat1



Project: DANZAS AEI EMIRATES FZ, DWC, Dubai  
Completion: Oct 2014  
Area: 22300 m<sup>2</sup>  
Flatness Tolerance: Cat1



# Some of Our Projects



Project: Glenbeigh -Dubai World Central, Jebel Ali, Dubai  
Completion: April 2013  
Area: 6500 m<sup>2</sup>  
Flatness Tolerance: Cat1



Project: SAVERGLAS Ras Al Khaimah  
Completion: March 2012  
Area: 3500 m<sup>2</sup>  
Flatness Tolerance: FM2-Outdoor concrete roads



Project: AL FAKHER TOBACCO-Ajman Free Zone  
Completion: March 2013  
Area: 2700 m<sup>2</sup>  
Flatness Tolerance: DM3



Project: MODERN PHARMACEUTICAL CO. Al Quoz, Dubai  
Completion: Feb 2013  
Area: 2500 m<sup>2</sup>  
Flatness Tolerance: Cat1



Project: MODERN FREIGHT CO. Jebel Ali, Free Zone  
Completion: Feb 2013  
Area: 4000 m<sup>2</sup>  
Flatness Tolerance: Cat1



Project: LOGICOM JAFZA South, Dubai  
Completion: Nov 2012  
Area: 4000 m<sup>2</sup>  
Flatness Tolerance: Cat1



Project: ADPC, KHIZAD Show Room Warehouse, Khalifa Port, Abu Dhabi  
Completion: Nov 2012  
Area: 2000 m<sup>2</sup>  
Flatness Tolerance: FM1



Project: ELSTER PACKAGING Ras Al Khaimah  
Completion: Oct 2012  
Area: 2300 m<sup>2</sup>  
Flatness Tolerance: FM2



Project: Spinneys Ras Al Kaimah  
Completion: Sept 2012  
Area: 12000 m<sup>2</sup>  
Flatness Tolerance: Cat1



Project: CATERPILLAR LOGISTICS Warehouse Extension, Jebel Ali, Dubai  
Completion: May 2012  
Area: 3600m<sup>2</sup>  
Flatness Tolerance: FM2Special



Project: UNITED MARKETING GROUP INTERNATIONAL, Jebel Ali, Dubai  
Completion: March 2012  
Area: 9000m<sup>2</sup>  
Flatness Tolerance: Cat1



Project: UNILEVER GULF FZE LIPTON TEA FACTORY  
Jebel Ali Free Zone, Dubai  
Completion: February 2012  
Area: 2600m<sup>2</sup> Flatness Tolerance: Cat1



Project: CUMMINS MIDDLE EAST-FZE, Jebel Ali Free Zone, Dubai  
Completion: January 2012  
Area: 5000m<sup>2</sup>  
Flatness Tolerance: FM2Special



Project: REAL FZE LOGISTICS FACILITY, Jebel Ali, Dubai  
Completion: November 2011  
Area: 14000m<sup>2</sup>  
Flatness Tolerance: FM2S

# Some of Our Projects



Project: GASOOS BIN HAMOODAH,  
JAFZA South, Dubai  
Completion: Aug 2014  
Area: 6000 m<sup>2</sup>  
Flatness Tolerance: FM2



Project: AVENUE L.L.C, Sharjah  
Completion: May 2014  
Area: 4500 m<sup>2</sup>  
Flatness Tolerance: Cat1



Project: HUTCHISON AJMAN  
INTERNATIONAL TERMINALS  
Completion: April 2014  
Area: 7600 m<sup>2</sup>  
Flatness Tolerance: Superflat



Project: RASASI PERFUMES, DUBAI  
INDUSTRIAL CITY  
Completion: April 2014  
Area: 24000 m<sup>2</sup>  
Flatness Tolerance: Cat1



Project: IDEALISM INDUSTRIES,  
Ras Al Kaimah  
Completion: March 2014  
Area: 4600 m<sup>2</sup>  
Flatness Tolerance: FM2



Project: INTERNATIONAL PAINTS,  
Al Quoz, Dubai  
Completion: Feb 2014  
Area: 3000 m<sup>2</sup>  
Flatness Tolerance: FM2



Project: H.H. RULERS COURT  
AIRPLANE HANGAR, Nad Al Sheba,  
Dubai Completion: Oct 2013  
Area: 14100 m<sup>2</sup>  
Flatness Tolerance: FM2



Project: DEWA DRINKING WATER  
BOTTLING FACILITY, Dubai  
Completion: Oct 2013  
Area: 5100 m<sup>2</sup>  
Flatness Tolerance: FM3



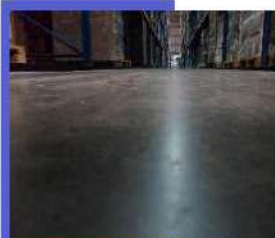
Project: G.E. EMIRATES JET ENGINE  
FACILITY, Al Warsan, Dubai  
Completion: Oct 2013  
Area: 17000 m<sup>2</sup>  
Flatness Tolerance: FM2



Project: G.E. EMIRATES JET ENGINE  
FACILITY, Al Warsan, Dubai  
Completion: Oct 2013  
Area: 2500 m<sup>2</sup>  
Flatness Tolerance: FM2



Project: AEROLOGISTICS DWC,  
Dubai  
Completion: July 2013  
Area: 4900 m<sup>2</sup>  
Flatness Tolerance: Cat1



Project: AL FAKHER TOBACCO,  
Ajman  
Completion: May 2013  
Area: 2600 m<sup>2</sup>  
Flatness Tolerance: DM3



Project: EROS GROUP, JEBEL ALI  
INDUSTRIAL AREA, Dubai  
Completion: Oct 2013  
Area: 5200 m<sup>2</sup>  
Flatness Tolerance: Cat1



Project: NTDE -Umm Ramool,  
Dubai  
Completion: May 2013  
Area: 8000 m<sup>2</sup>  
Flatness Tolerance: Cat1

# Our Clients



+971 4 324 0447 | +971 4 887 4016 | +971 4 324 0451

paxkent@paxkent.ae | info@paxkent.ae | www.paxkent.com | Dubai Investment Park 2

Pax-Kent International L.L.C Since 1980

## Our Location

